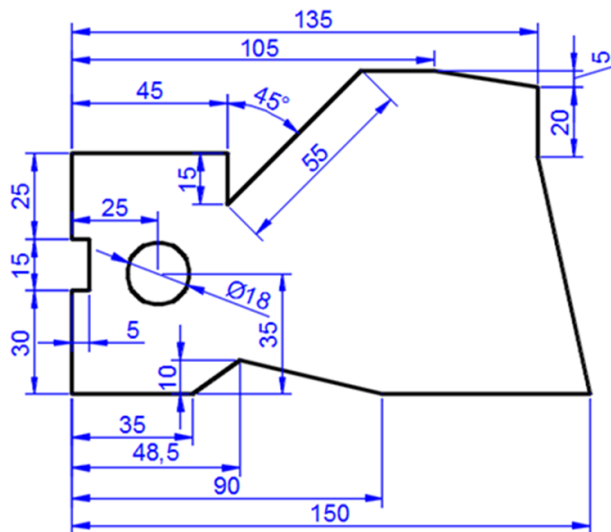


Exercise no 3

New commands: ARC, POLYLINE, POLYGON, POINT, DIVIDE, MEASURE, SPLINE.

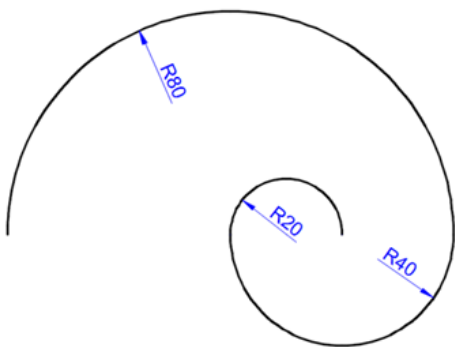
3.1. Drawing using the tracking command - review

Beginning at the bottom left corner draw the figures (without dimensions) using location, tracking and temporary location points. Do not break the line drawing sequence if possible and try to draw without calculating the distances not indicated on the drawings.



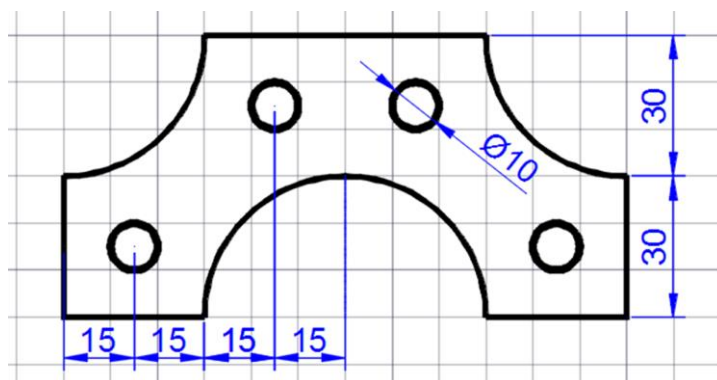
3.2. Drawing arcs

Using ARC command with options START, CENTER, END draw the figure depicted at right (for ease of use you can set appropriate SNAP size).



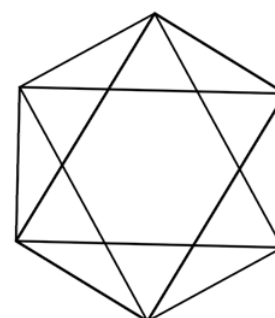
3.3. Drawing polyline

Using the polyline (pline, pl) command draw the contour shown below. Specify appropriate grid and snap.



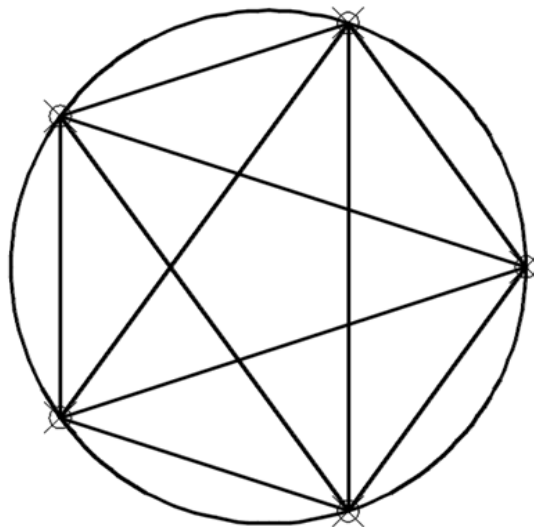
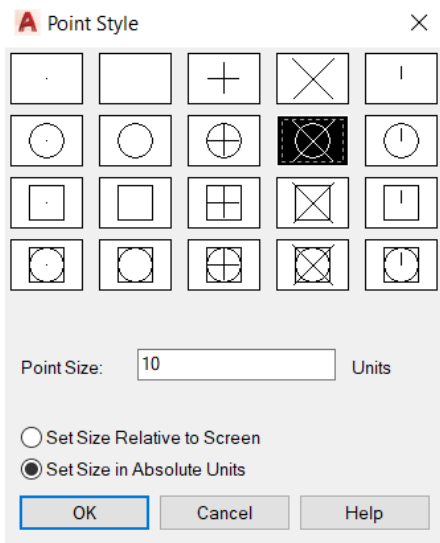
3.4. Drawing polygons.

Using POLYGON command, draw the adjacent hexagon and later on inscribe two triangles



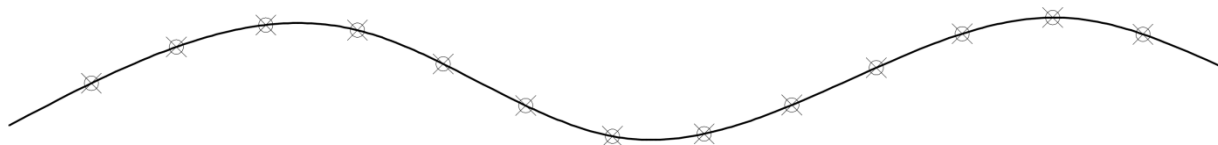
3.5. Drawing points – division of the object into equal parts

Draw a circle and subsequently divide the circumference of the circle into five arcs of equal length (DIVIDE command). Using PTYPE command set the correct point style. Connect all the points with line segments.



3.6. Drawing splines – division of the object into equal defined length

Draw a smooth curve longer than 400 units using Spline command. Subsequently, using the Measure command subdivide the curve into sections 50 units long. Using BREAK AT POINT command located on the HOME tab of the MODIFY panel divide the spline into three pieces indicating two neighboring points as points of intersection. Using MEASUREGEOM command with option AREA and OBJECT calculate the length of the cut off middle section.



3.7. Review exercise

