

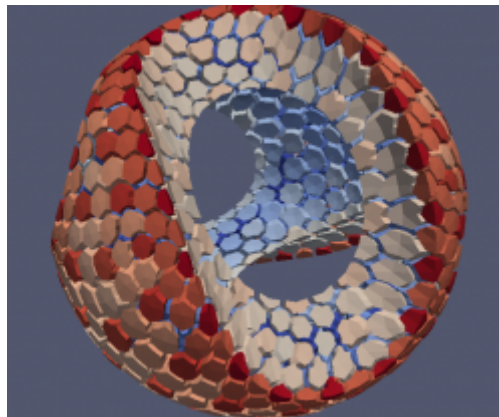
[Back](#)

# Gallery

Collection of miscellaneous images mostly related to research and teaching. Click on image to get more detailed view.

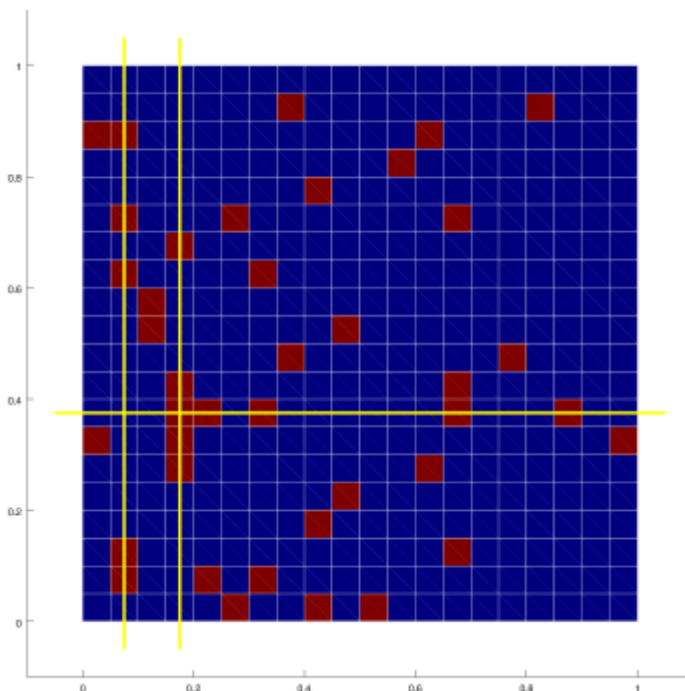
## Polyhedral mesh generation

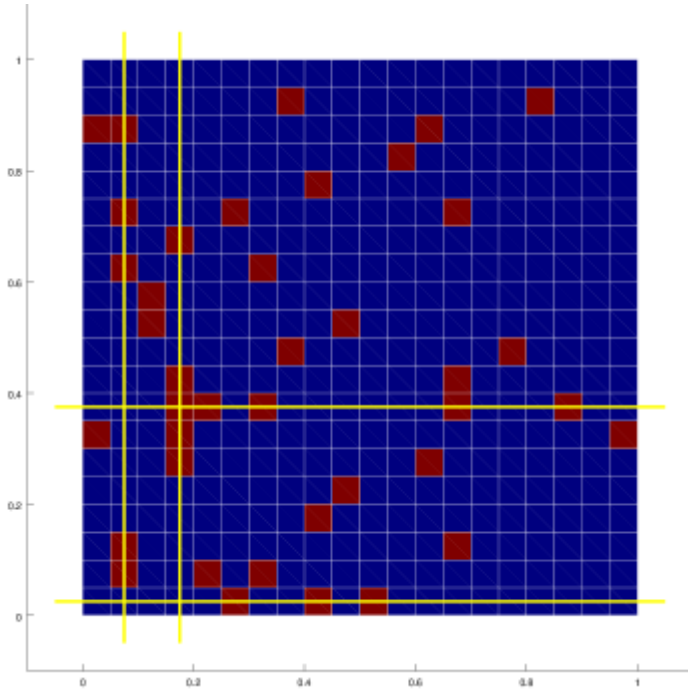
Click on the image to see a short animation. More can be seen on the [PolyGen page](#).



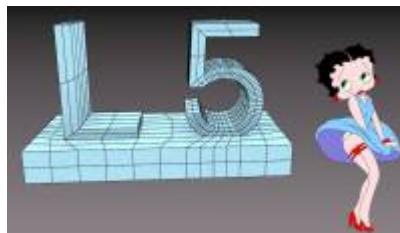
## Mesh adaptation

Couple of images and animation related to mesh adaptation can be found [this page](#)





### L-5 Fun



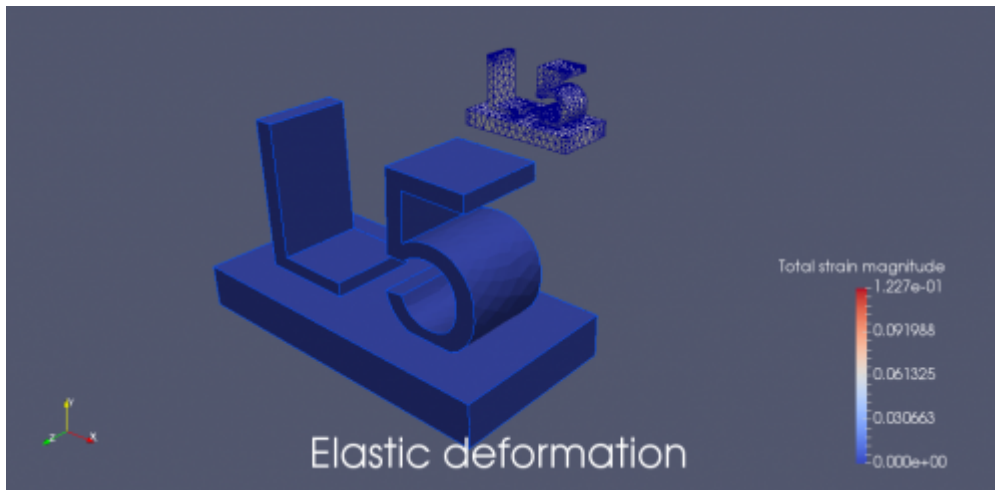
Some funny pictures with L-5 Logo

### L-5 Bending

Animation of elastic deformation of L-5 logo under its own weight (with some cheating as gravity acts not vertically :) Click on the image to start the movie.

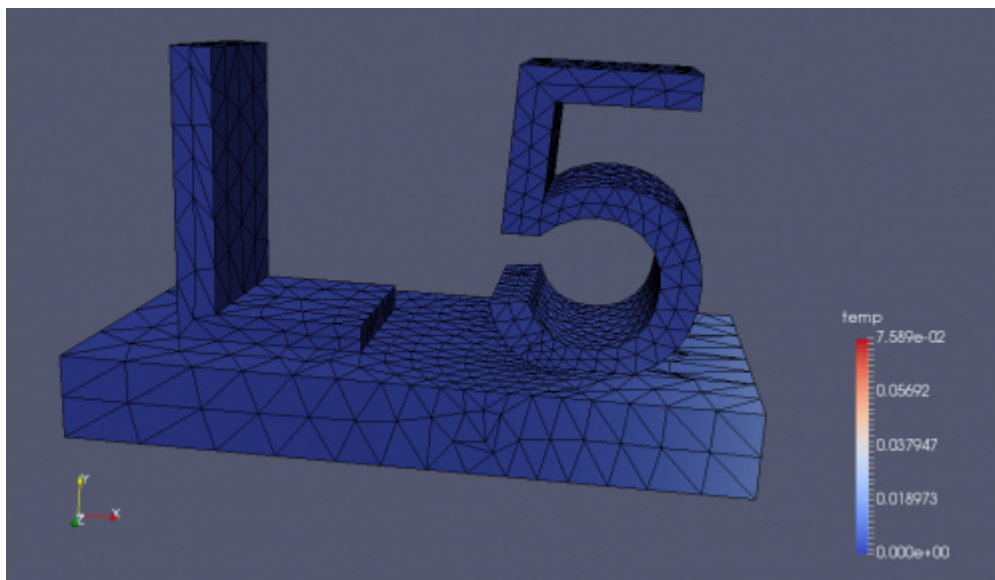


Caution, the second animation is rather big, ~10MB, thus it can load slowly.



## L-5 Rainbow

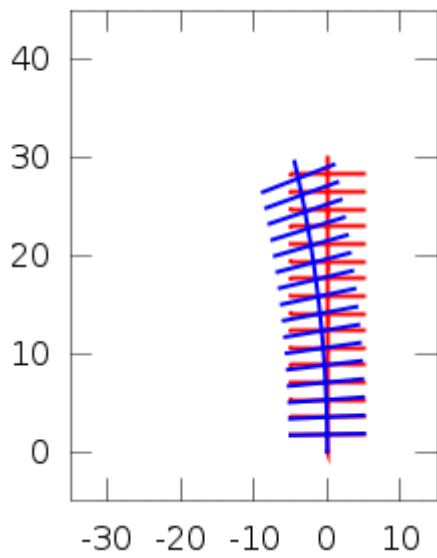
Animation of heat flow through a L-5 logo. Click on the image to start the movie.



More of similar images can be found at [my Google account](#)

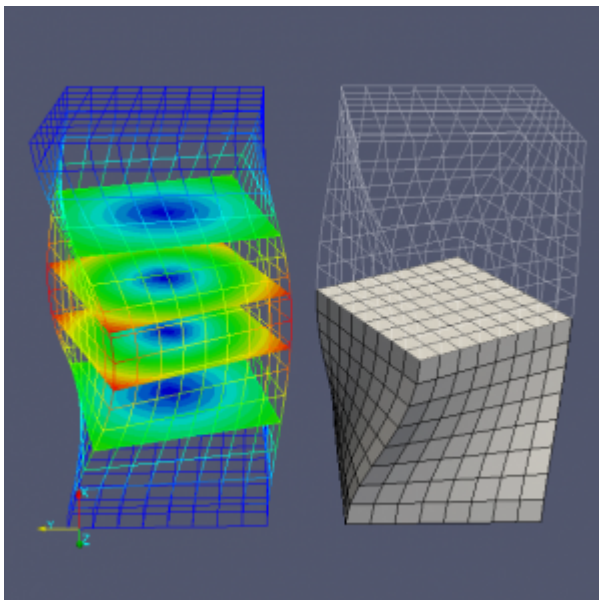
## Morphbar

“Bending a tree” – illustration of the idea from which Morphbar project has originated. More on [this page](#)

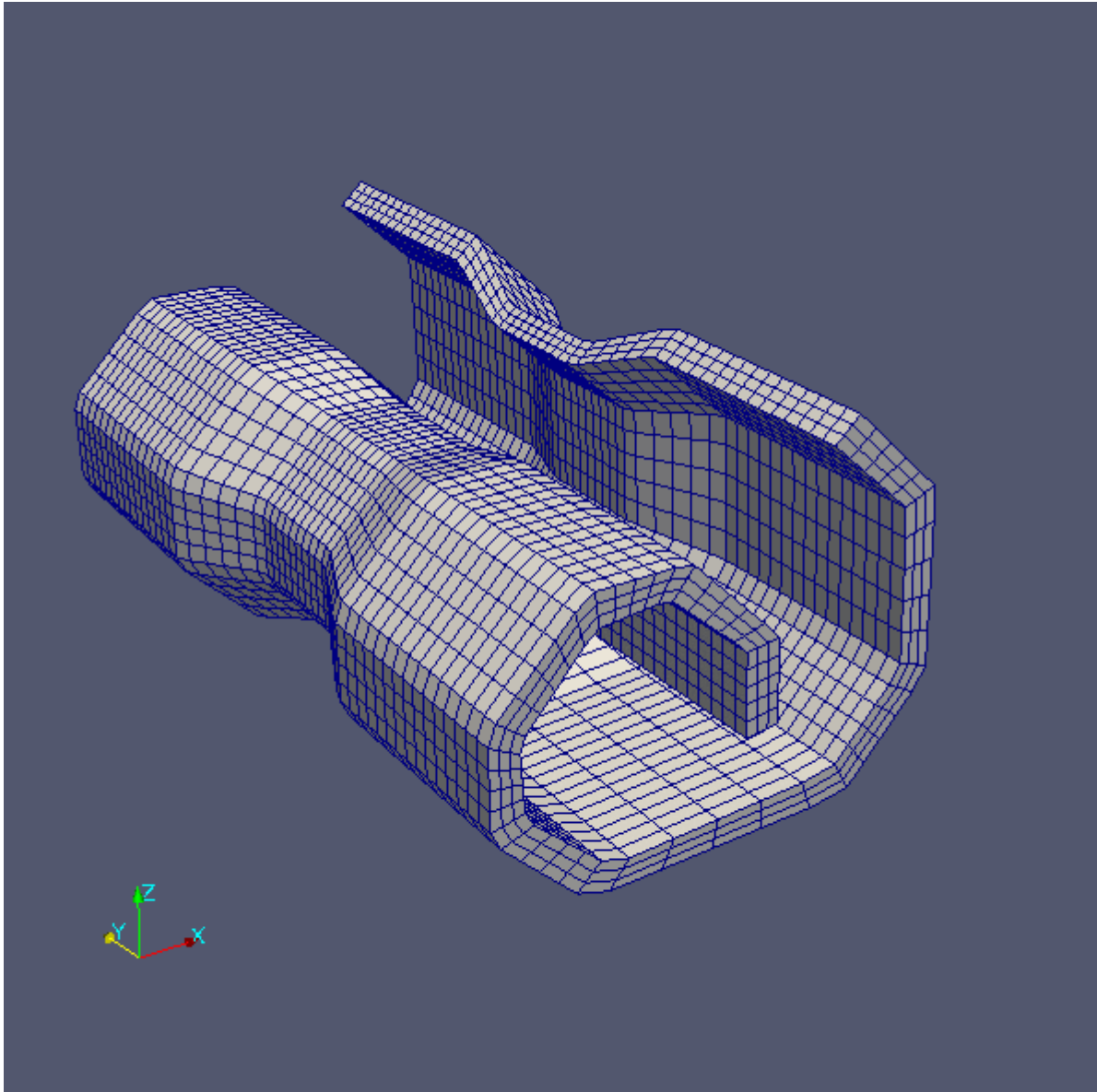


More images related to Morphbar project can be found on [its Trac wiki](#).

Rotating deformation of NURBS cage:



Influence of NURBS order on body shape:

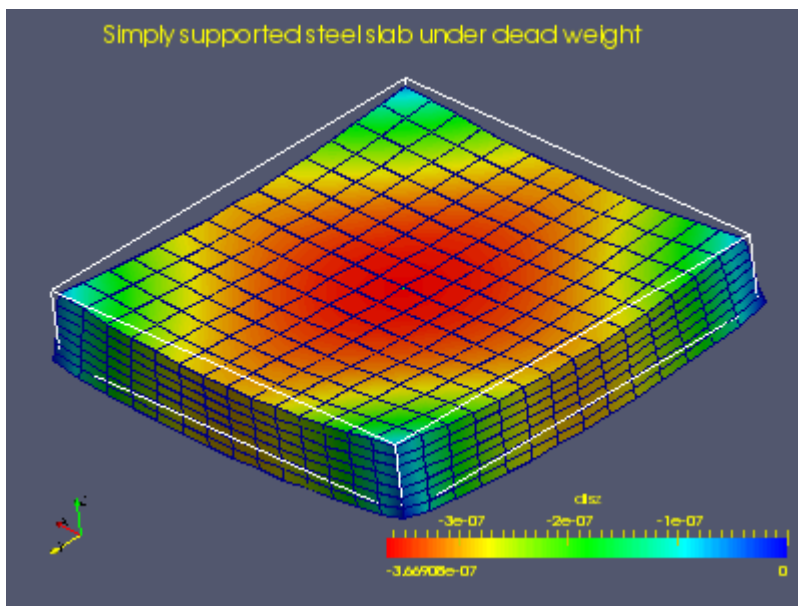


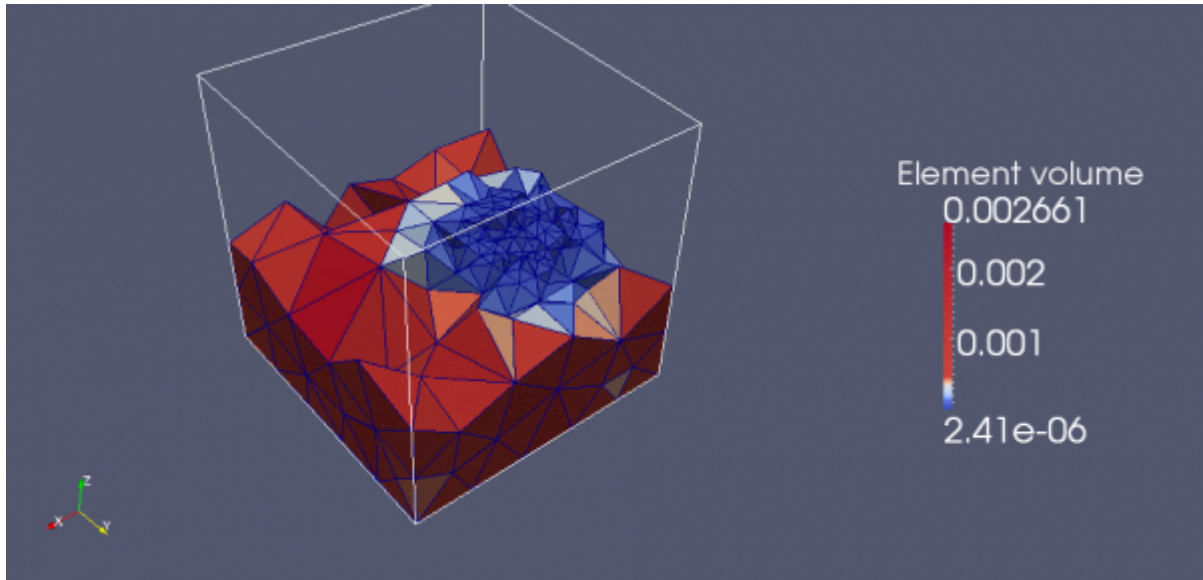
### **Playful, alegoric view on L-5 research areas**

Concept: Roman Putanowicz and [Anna Perduta](#). Graphic design: [Marcin Tekieli](#).



**More serious stuff**





[Back](#)

From:

<https://www.cce.pk.edu.pl/~putanowr/dokuwiki/> - **Roman Putanowicz Wiki**

Permanent link:

<https://www.cce.pk.edu.pl/~putanowr/dokuwiki/doku.php?id=en:gallery&rev=1506952483>

Last update: **2017/10/02 15:54**